

# Cleaning, Maintenance, and Hospitality Services

## Manchester Downtown Services



# Streetplus Company, LLC

- Founded in 1991
- Corporate Office in Brooklyn, NY
- Nearly 90 customers in fourteen states with over 600 employees
- Only privately owned and operated vendor serving the Improvement District industry
- Full service company providing maintenance/cleaning, hospitality, safety/security, landscaping, social service outreach, and technology

# Streetplus Company, LLC

- Cleaning services include the following:

- Litter Collection and Removal
- Graffiti Removal
- Weed Abatement
- Special Projects
- Pressure Washing
- Plant Watering

*All employees are trained to provide hospitality services and have a basic understanding of how to address unhoused / unsheltered individuals on the streets*

# Streetplus Company, LLC

April 1st - October 31st

Labor Classification	Hours	# of Emp
Cleaning Ambassador	248.00	6.20
Team Leader	24.00	0.60
Operations Manager	40.00	1.00
<i>Total</i>	<i>312.00</i>	<i>7.80</i>

November 1st - March 31st

Labor Classification	Hours	# of Emp
Cleaning Ambassador	160.00	4.00
Team Leader	0.00	0.00
Operations Manager	40.00	1.00
<i>Total</i>	<i>200.00</i>	<i>5.00</i>

# Streetplus Company, LLC

## ANNUAL COST FOR SERVICES

COST CATEGORY	TOTAL COST	% of TOTAL
Payroll and Taxes	\$ 330,666.75	75.83%
Operating Expenses	\$ 55,325.09	12.69%
General and Administrative Overhead	\$ 6,000.00	1.38%
Employee Benefits	\$ 44,060.00	10.10%
<i>TOTAL ANNUAL COST</i>	<i>\$ 436,051.83</i>	<i>100.00%</i>

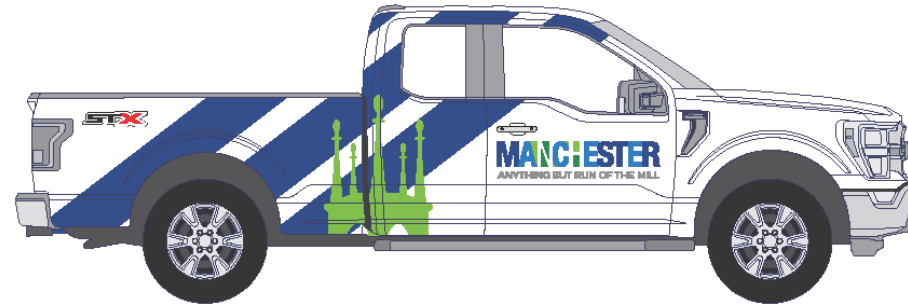
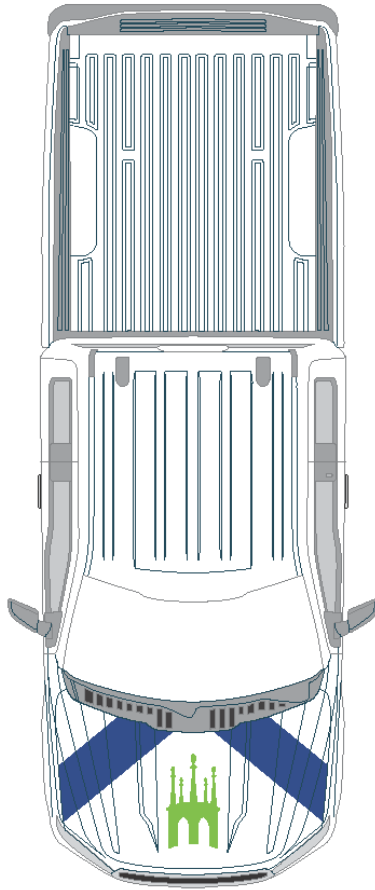
Baseline Services	\$ 436,051.83
Capital Equipment	\$ 34,644.50
Management Fee	\$ 43,605.18
<i>SUB-TOTAL</i>	<i>\$ 514,301.52</i>
Ford F-150 Lease	\$ 18,000.00
<i>TOTAL</i>	<i>\$ 532,301.52</i>

# Streetplus Company, LLC

## PAY RATES

Labor Classification	2024	2025	2026
Clean Ambassador	\$ 18.00	\$ 18.50	\$ 19.00
Team Leader	\$ 20.00	\$ 20.50	\$ 21.00
Operations Manager	\$ 31.25	\$ 32.69	\$ 33.65

# Capital Equipment



1:20 Scale | Concept #1



# Capital Equipment





# Capital Equipment



# Capital Equipment



# Capital Equipment



# Capital Equipment



# Graffiti

Before



After





# Graffiti

**Before**



**After**



# Graffiti

**Before**



**After**





# Litter

**Before**



**After**





# Litter

Before



After

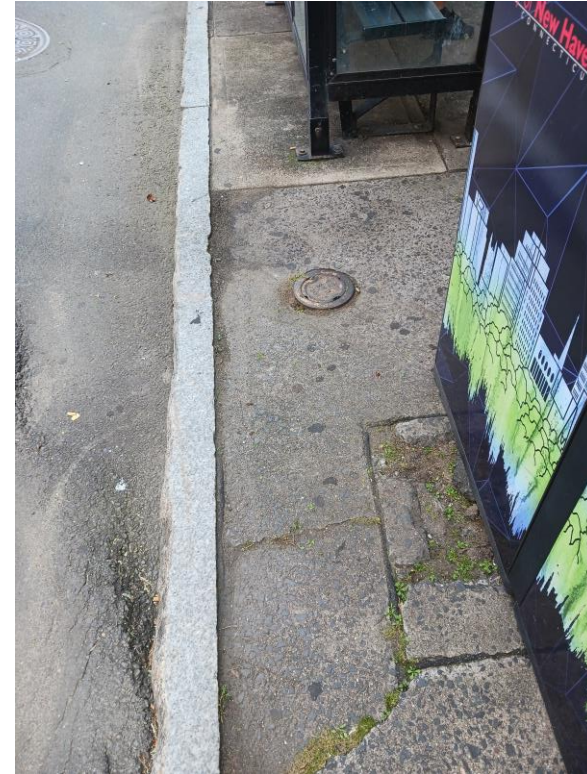


# Weed Abatement

**Before**



**After**





# Weed Abatement

**Before**



**After**

